

Master **Record Keeping**

Rain Master

Welcome to Rain Master

Rain Master Menu

Enter Name of Property of Rain Record

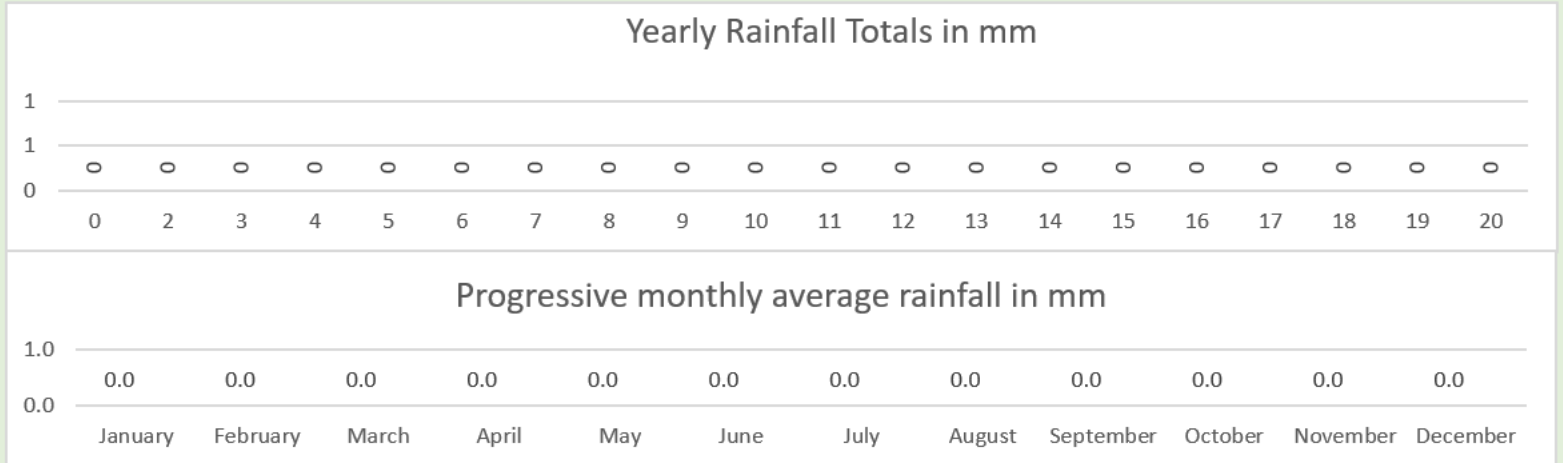
Click on year no. to go to entry pages

- [Year 1.](#)
- [Year 2.](#) 2
- [Year 3.](#) 3
- [Year 4.](#) 4
- [Year 5.](#) 5
- [Year 6.](#) 6
- [Year 7.](#) 7
- [Year 8.](#) 8
- [Year 9.](#) 9
- [Year 10.](#) 10
- [Year 11.](#) 11
- [Year 12.](#) 12
- [Year 13.](#) 13
- [Year 14.](#) 14
- [Year 15.](#) 15
- [Year 16.](#) 16
- [Year 17.](#) 17
- [Year 18.](#) 18
- [Year 19.](#) 19
- [Year 20.](#) 20

Enter Start Year

Printable Charts

- [Comparison of wettest months in 5 year periods](#)
- [20 year progressive comparison](#) to 20
- [Average comparisons](#)
- [1st 5 years comparison](#) to 5
- [2nd 5 years comparison](#) 6 to 10
- [3rd 5 years comparison](#) 11 to 15
- [4th 5 years comparison](#) 16 to 20



Rain records that talk back

Rain Master Menu

Enter Name of Property of Rain Record

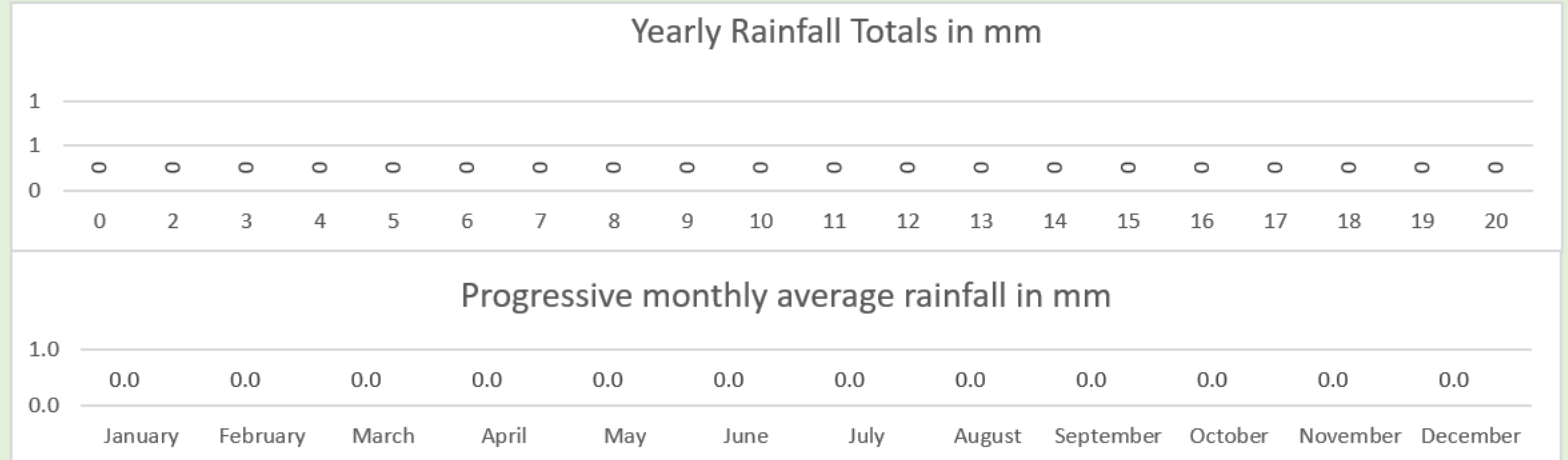
Click on year no. to go to entry pages

- [Year 1.](#)
- [Year 2.](#) 2
- [Year 3.](#) 3
- [Year 4.](#) 4
- [Year 5.](#) 5
- [Year 6.](#) 6
- [Year 7.](#) 7
- [Year 8.](#) 8
- [Year 9.](#) 9
- [Year 10.](#) 10
- [Year 11.](#) 11
- [Year 12.](#) 12
- [Year 13.](#) 13
- [Year 14.](#) 14
- [Year 15.](#) 15
- [Year 16.](#) 16
- [Year 17.](#) 17
- [Year 18.](#) 18
- [Year 19.](#) 19
- [Year 20.](#) 20

Enter Start Year

Printable Charts

- [Comparison of wettest months in 5 year periods](#)
- [20 year progressive comparison](#) to 20
- [Average comparisons](#)
- [1st 5 years comparison](#) to 5
- [2nd 5 years comparison](#) 6 to 10
- [3rd 5 years comparison](#) 11 to 15
- [4th 5 years comparison](#) 16 to 20



Rain Master Menu

Enter Name of Property of Rain Record

Click on year no. to go to entry pages

- [Year 1.](#) 1
- [Year 2.](#) 2
- [Year 3.](#) 3
- [Year 4.](#) 4
- [Year 5.](#) 5
- [Year 6.](#) 6
- [Year 7.](#) 7
- [Year 8.](#) 8
- [Year 9.](#) 9
- [Year 10.](#) 10
- [Year 11.](#) 11
- [Year 12.](#) 12
- [Year 13.](#) 13
- [Year 14.](#) 14
- [Year 15.](#) 15
- [Year 16.](#) 16
- [Year 17.](#) 17
- [Year 18.](#) 18
- [Year 19.](#) 19
- [Year 20.](#) 20

Enter Start Year

Printable Charts

[Comparison of wettest months in 5 year periods](#)

[Progressive comparison](#) to 20

[Comparisons](#)

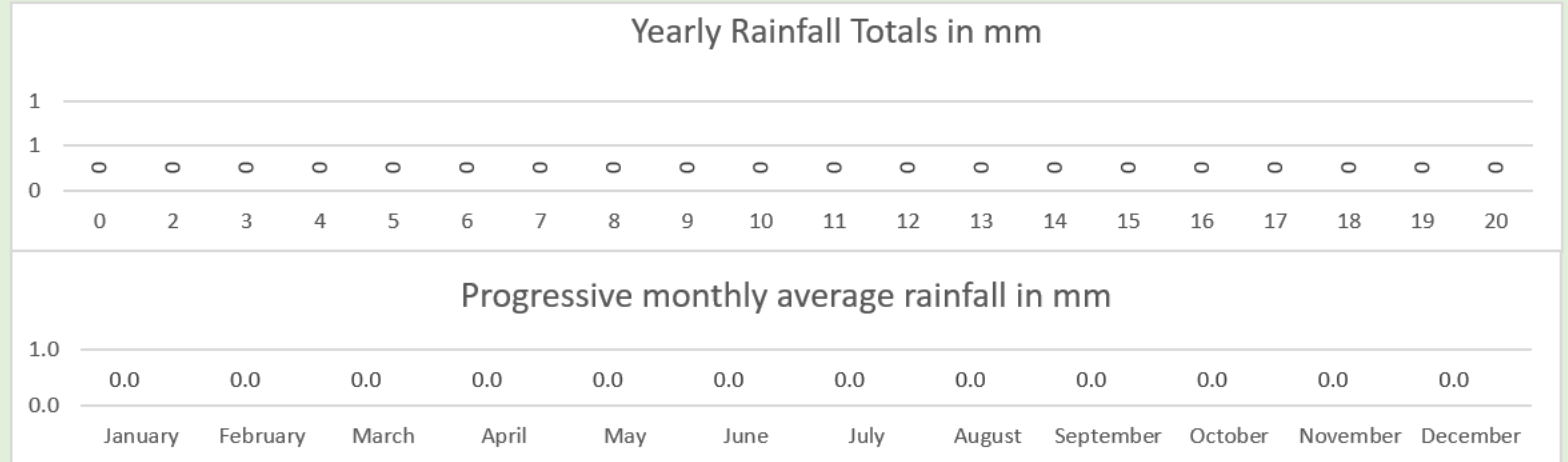
[Comparison](#) to 5

[2nd 5 years comparison](#) 6 to 10

[3rd 5 years comparison](#) 11 to 15

[4th 5 years comparison](#) 16 to 20

Two set-up entries then good to go



Rain Master Menu



And the following years will auto-generate

Year no. to go to entry pages	Year 1.	2017	Er
	Year 2.	2018	
	Year 3.	2019	
	Year 4.	2020	
	Year 5.	2021	
	Year 6.	2022	
	Year 7.	2023	
	Year 8.	2024	
	Year 9.	2025	
	Year 10.	2026	
	Year 11.	2027	
	Year 12.	2028	
	Year 13.	2029	
	Year 14.	2030	
	Year 15.	2031	
	Year 16.	2032	
	Year 17.	2033	
	Year 18.	2034	
	Year 19.	2035	
	Year 20.	2036	

Rain Master Menu

Enter Name of Property of Rain Record

Willow Downs Oxley Vale

Click on year no. to go to entry page



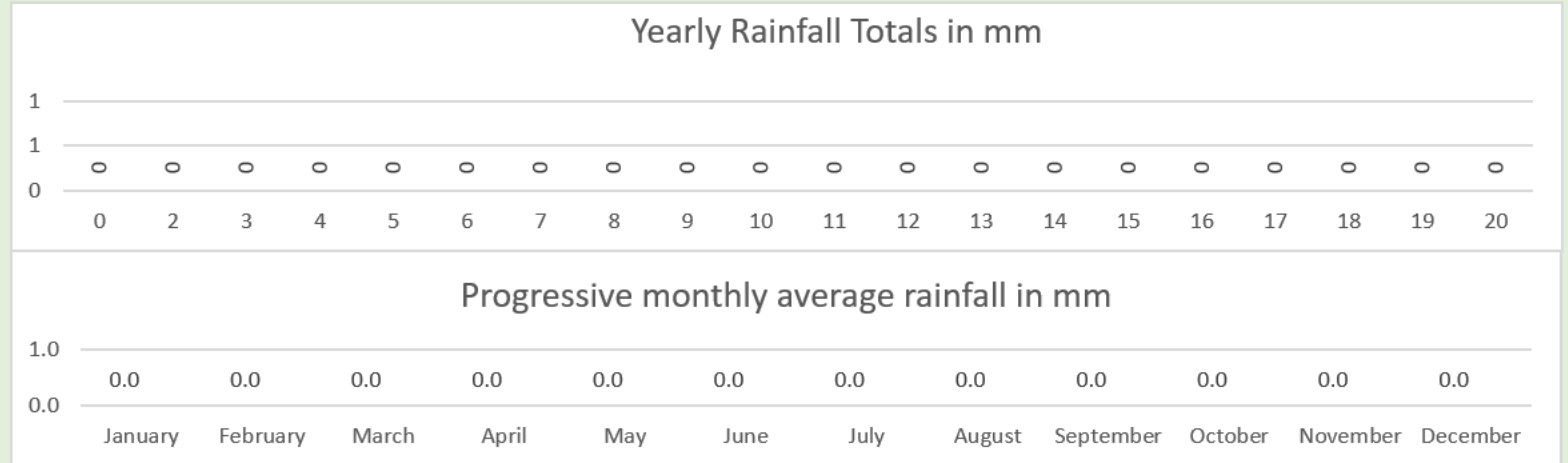
- [Year 1.](#)
- [Year 2.](#)
- [Year 3.](#)
- [Year 4.](#)
- [Year 5.](#)
- [Year 6.](#)
- [Year 7.](#)
- [Year 8.](#)
- [Year 9.](#)
- [Year 10.](#)
- [Year 11.](#)
- [Year 12.](#)
- [Year 13.](#)
- [Year 14.](#)
- [Year 15.](#)
- [Year 16.](#)
- [Year 17.](#)
- [Year 18.](#)
- [Year 19.](#)
- [Year 20.](#)

- 2017 Enter Start Year
- 2018
 - 2019
 - 2020
 - 2021
 - 2022
 - 2023
 - 2024
 - 2025
 - 2026
 - 2027
 - 2028
 - 2029
 - 2030
 - 2031
 - 2032
 - 2033
 - 2034
 - 2035
 - 2036

‘Click’ on the year date to go to that year entry page

Printable Charts

- [Comparison of wettest months in 5 year periods](#)
- [20 year progressive comparison](#) to 20
- [Average comparisons](#)
- [1st 5 years comparison](#) to 5
- [2nd 5 years comparison](#) 6 to 10
- [3rd 5 years comparison](#) 11 to 15
- [4th 5 years comparison](#) 16 to 20



Back to Menu	Time normally measured		Select	Total Year mm 1106.9		In inches 43.58		Wet days 82		Willow Downs Oxley Vale		Year 1	2017
Go to Graphs	January	February	March	April	May	June	July	August	September	October	November	December	
Mth Totals	129.1	48.5	320	26.25	39.8	133.25	0	0	0	229.25	97.25	83.5	
mm above/below av	11.9	-148.1	111.9	-32.3	-3.2	77.7	0.0	0.0	0.0	91.0	35.7	-57.5	
1st	39												3
2nd		10								11.5			
3rd	29		3							9.5			
4th			12.5										3.5
5th	9.5											17.5	
6th				11	6.5					4.5	17		
7th										2	1.25		
8th		5.5											1.5
9th				2.75	6.5								15
10th					2					0.5			
11th							39					8.5	
12th				1			14.5						
13th			17		2.5		49.5				4		
14th			23.5		1.5		4.5				7		
15th	34		23.5				2				26.5		
16th							2				15.25		
17th			2				13.25				26		
18th		4.5	23								7.5		
19th	4	8	6								0.5	19.5	
20th		13	4	5	17.3								
21st	4.6		8.5		1.5						35.5	11.5	9
22nd			8.75		2	8.5						12.5	
23rd			42.75								75		
24th													
25th			7										16
26th	5									4			4
27th	4			6.5									2.5
28th		7.5											
29th			10.5										
30th												9.5	
31st			128										29
	8	6	15	5	8	8	0	0	0	15	8	9	

Back to Menu	Time normally measured		Select	Total Year mm 1106.9	In inches 43.58		Wet days 82		Willow Downs Oxley Vale		Year 1	2017
Go to Graphs	January	February	March	April	May	June	July	August	September	October	November	December
Mth Totals	129.1	48.5	320	26.25	39.8	133.25	0	0	0	229.25	97.25	83.5
mm above/below av	11.9	-148.1	111.9	-32.3	-3.2	77.7	0.0	0.0	0.0	91.0	35.7	-57.5
1st	39											3
2nd		10								11.5		
3rd	29		3							9.5		
4th			12.5									3.5
5th	9.5										17.5	
6th				11	6.5					4.5	17	
7th										2	1.25	
8th												1.5
9th												15
10th										0.5		
11th							39				8.5	
12th				1			14.5					
13th			17		2.5		49.5			4		
14th			23.5		1.5		4.5			7		
15th	34		23.5				2			26.5		
16th							2			15.25		
17th			2				13.25			26		
18th		4.5	23							7.5		
19th	4	8	6							0.5	19.5	
20th		13	4	5	17.3							
21st	4.6		8.5		1.5					35.5	11.5	9
22nd			8.75		2	8.5					12.5	
23rd			42.75							75		
24th												
25th			7									16
26th	5									4		4
27th	4			6.5								2.5
28th		7.5										
29th			10.5									
30th											9.5	
31st			128									29
	8	6	15	5	8	8	0	0	0	15	8	9



As normal, just make daily entries of rainfall

Back to Menu	Time normally measured		Select	Total Year mm 1106.9		In inches 43.58		Wet days 82		Willow Downs Oxley Vale		Year 1	2017
Go to Graphs	January	February	March	April	May	June	July	August	September	October	November	December	
Mth Totals	129.1	48.5	320	26.25	39.8	133.25	0	0	0	229.25	97.25	83.5	
mm above/below av	11.9	-148.1	111.9	-32.3	-3.2	77.7	0.0	0.0	0.0	91.0	35.7	-57.5	
1st	39												3
2nd		10								11.5			
3rd	29		3							9.5			
4th			12.5										3.5
5th	9.5											17.5	
6th				11	6.5					4.5	17		
7th										2	1.25		
8th													1.5
9th													15
10th										0.5			
11th						39					8.5		
12th				1		14.5							
13th			17		2.5	49.5				4			
14th			23.5		1.5	4.5				7			
15th	34		23.5			2				26.5			
16th						2				15.25			
17th			2			13.25				26			
18th		4.5	23							7.5			
19th	4	8	6							0.5	19.5		
20th		13	4	5	17.3								
21st	4.6		8.5		1.5					35.5	11.5	9	
22nd			8.75		2	8.5					12.5		
23rd			42.75							75			
24th													
25th			7										16
26th	5									4		4	
27th	4			6.5									2.5
28th		7.5											
29th			10.5										
30th												9.5	
31st			128										29
	8	6	15	5	8	8	0	0	0	15	8	9	

This page already has entries for 2017

Back to Menu	Time normally measured		Select	Total Year mm 1106.9		In inches 43.58		Wet days 82		Willow Downs Oxley Vale		Year 1	2017
Go to Graphs	January	February	March	April	May	June	July	August	September	October	November	December	
Mth Totals	129.1	48.5	320	26.25	39.8	133.25	0	0	0	229.25	97.25	83.5	
mm above/below av	11.9	-148.1	111.9	-32.3	-3.2	77.7	0.0	0.0	0.0	91.0	35.7	-57.5	
1st	39												3
2nd		10								11.5			
3rd	29		3							9.5			
4th			12.5										3.5
5th	9.5											17.5	
6th				11	6.5					4.5	17		
7th										2	1.25		
8th													1.5
9th													15
10th										0.5			
11th											8.5		
12th													
13th											4		
14th											7		
15th	34										26.5		
16th											15.25		
17th											26		
18th		4.5	23								7.5		
19th	4	8	6								0.5	19.5	
20th		13	4	5	17.3								
21st	4.6		8.5		1.5						35.5	11.5	9
22nd			8.75		2	8.5						12.5	
23rd			42.75								75		
24th													
25th			7										16
26th	5										4		4
27th	4			6.5									2.5
28th		7.5											
29th			10.5										
30th												9.5	
31st			128										29
	8	6	15	5	8	8	0	0	0	15	8	9	

And this *Rain Master* Record Keeper already has records through to Nov 2022 on the next consecutive year pages

Back to Menu	Time normally measured		Select	Total Year mm 1106.9		In inches 43.58		Wet days 82		Willow Downs Oxley Vale		Year 1	2017
Go to Graphs	January	February	March	April	May	June	July	August	September	October	November	December	
Mth Totals	129.1	48.5	320	26.25	39.8	133.25	0	0	0	229.25	97.25	83.5	
mm above/below av	39	-148.1	111.9	-32.3	-3.2	77.7	0.0	0.0	0.0	91.0	35.7	-57.5	
1st	39												3
2nd		10								11.5			
3rd	29		3							9.5			
4th			12.5										3.5
5th	9.5											17.5	
6th				11	6.5					4.5	17		
7th										2	1.25		
8th													1.5
9th													15
10th										0.5			
11th							39					8.5	
12th				1			14.5						
13th			17		2.5		49.5			4			
14th			23.5		1.5		4.5			7			
15th	34		23.5				2			26.5			
16th							2			15.25			
17th			2				13.25			26			
18th		4.5	23							7.5			
19th	4	8	6							0.5	19.5		
20th		13	4	5	17.3								
21st	4.6		8.5		1.5					35.5	11.5	9	
22nd			8.75		2	8.5					12.5		
23rd			42.75							75			
24th													
25th			7										16
26th	5									4		4	
27th	4			6.5									2.5
28th		7.5											
29th			10.5										
30th												9.5	
31st			128										29
	8	6	15	5	8	8	0	0	0	15	8	9	



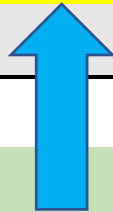
The page gives monthly totals of course

Back to Menu	Time normally measured		Select	Total Year mm 1106.9	In inches 43.58		Wet days 82	Willow Downs Oxley Vale		Year 1	2017	
Go to Graphs	January	February	March	April	May	June	July	August	September	October	November	December
Mth Totals	129.1	48.5	320	26.25	39.8	133.25	0	0	0	229.25	97.25	83.5
mm above/below av	11.9	-148.1	111.9	-32.3	-3.2	77.7	0.0	0.0	0.0	91.0	35.7	-57.5
1st	39											3
2nd		10								11.5		
3rd	29		3							9.5		
4th			12.5									3.5
5th	9.5										17.5	
6th				11	6.5					4.5	17	
7th										2	1.25	
8th												1.5
9th												15
10th										0.5		
11th											8.5	
12th												
13th										4		
14th										7		
15th										26.5		
16th										15.25		
17th										26		
18th		4.5	23							7.5		
19th	4	8	6							0.5	19.5	
20th		13	4	5	17.3							
21st	4.6		8.5		1.5					35.5	11.5	9
22nd			8.75		2	8.5					12.5	
23rd			42.75							75		
24th												
25th			7									16
26th	5									4		4
27th	4			6.5								2.5
28th		7.5										
29th			10.5									
30th											9.5	
31st			128									29
	8	6	15	5	8	8	0	0	0	15	8	9



But as there are already several years entered, it also shows the difference in average (in mm) from the progressive average within the 20 years of the records

Back to Menu	Time normally measured			Select	IC
Go to Graphs	January	February	March	Ap	
Mth Totals	129.1	48.5	320		
mm above/below av	11.9	-148.1	111.9		
1st	39				
2nd		10			



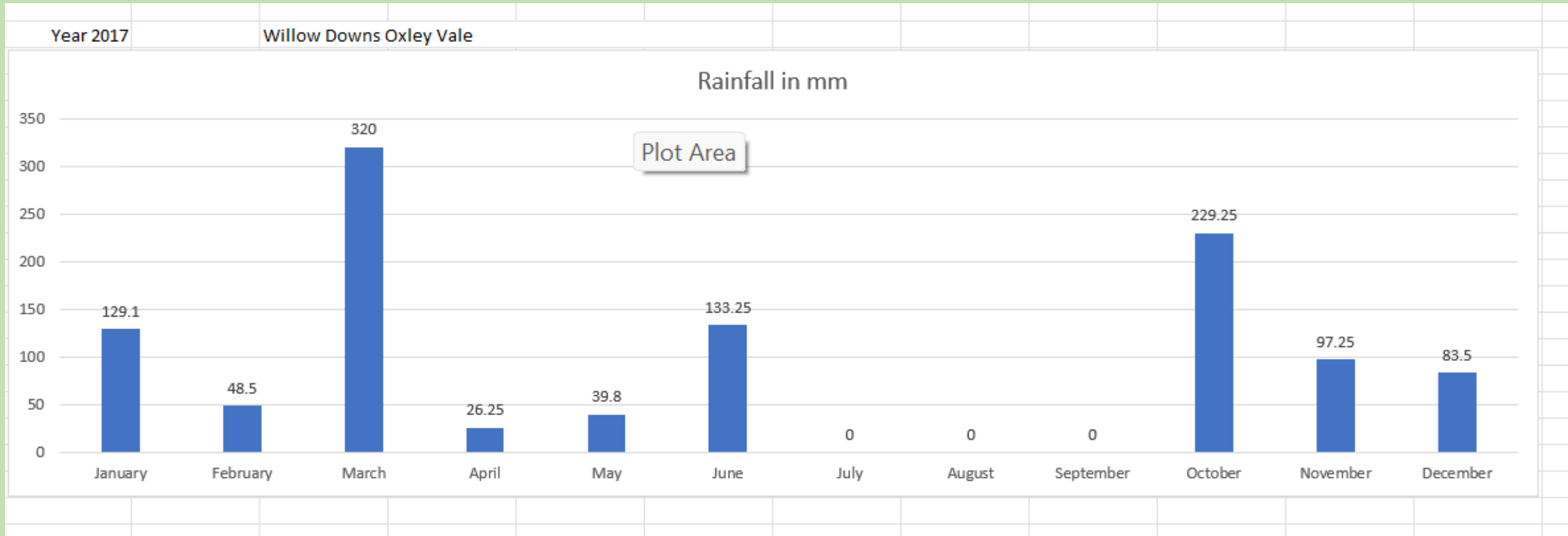
11.9 above average (in this case over 6 years, 2017-2022)

Back to Menu	Time normally measured			Select	IC
Go to Graphs	January	February	March	Ap	
Mth Totals	129.1	48.5	320		
mm above/below av	11.9	-148.1	111.9		
1st	39				
2nd		10			

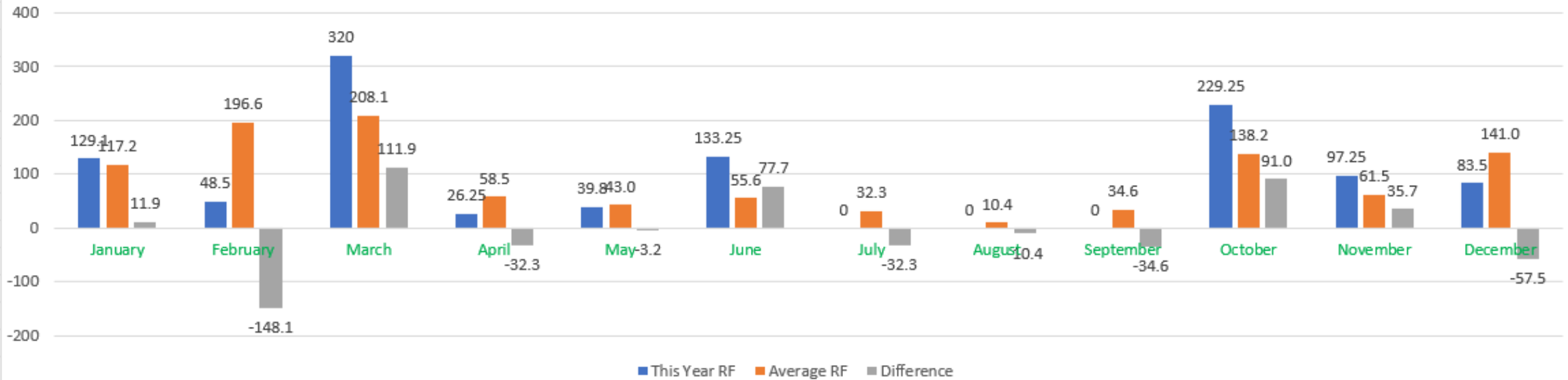


148.1 mm below average

Each year gives its own graphic results



This year in comparison with average months by month in mm



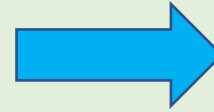
ter Menu

Enter Name of Property of Rain Record

Willow Downs Oxley Vale

Pages Year 1. 2017 Enter Start Year

And also there are longer-term comparisons



- [Year 4.](#) 2020
- [Year 5.](#) 2021
- [Year 6.](#) 2022
- [Year 7.](#) 2023
- [Year 8.](#) 2024
- [Year 9.](#) 2025
- [Year 10.](#) 2026
- [Year 11.](#) 2027
- [Year 12.](#) 2028
- [Year 13.](#) 2029
- [Year 14.](#) 2030
- [Year 15.](#) 2031
- [Year 16.](#) 2032
- [Year 17.](#) 2033
- [Year 18.](#) 2034
- [Year 19.](#) 2035

Printable Charts

[Comparison of wettest months in 5 year periods](#)

[20 year progressive comparison](#) 2017 to 2036

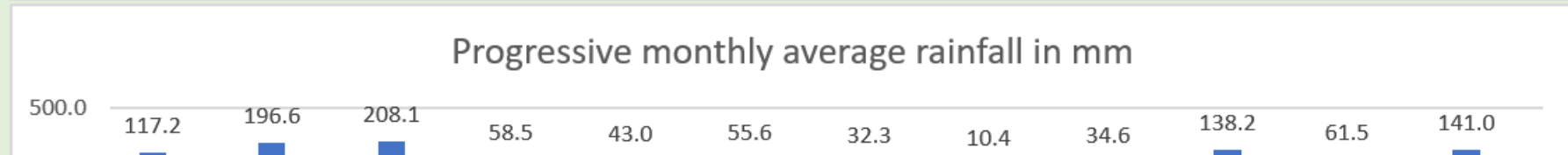
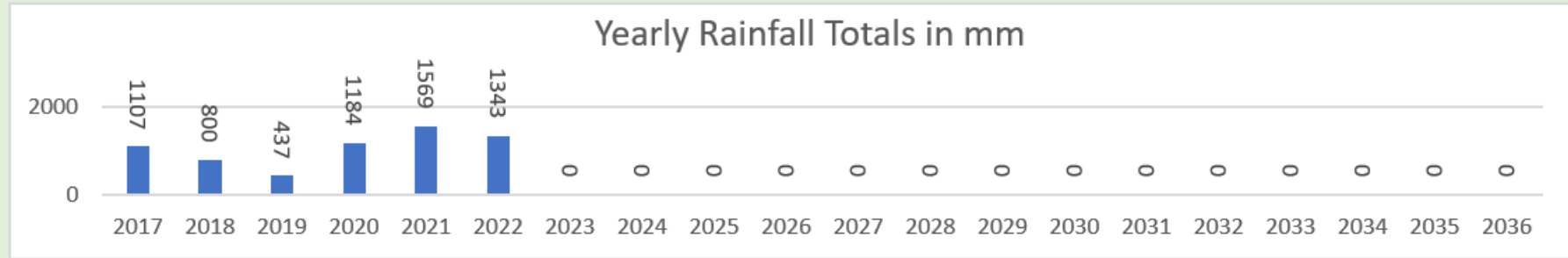
[Average comparisons](#)

[1st 5 years comparison](#) 2017 to 2021

[2nd 5 years comparison](#) 2022 to 2026

[3rd 5 years comparison](#) 2027 to 2031

[4th 5 years comparison](#) 2032 to 2036



Printable Charts

[Comparison of wettest months in 5 year periods](#)

[20 year progressive comparison](#) 2017 to 2036

[Average comparisons](#)

[1st 5 years comparison](#) 2017 to 2021

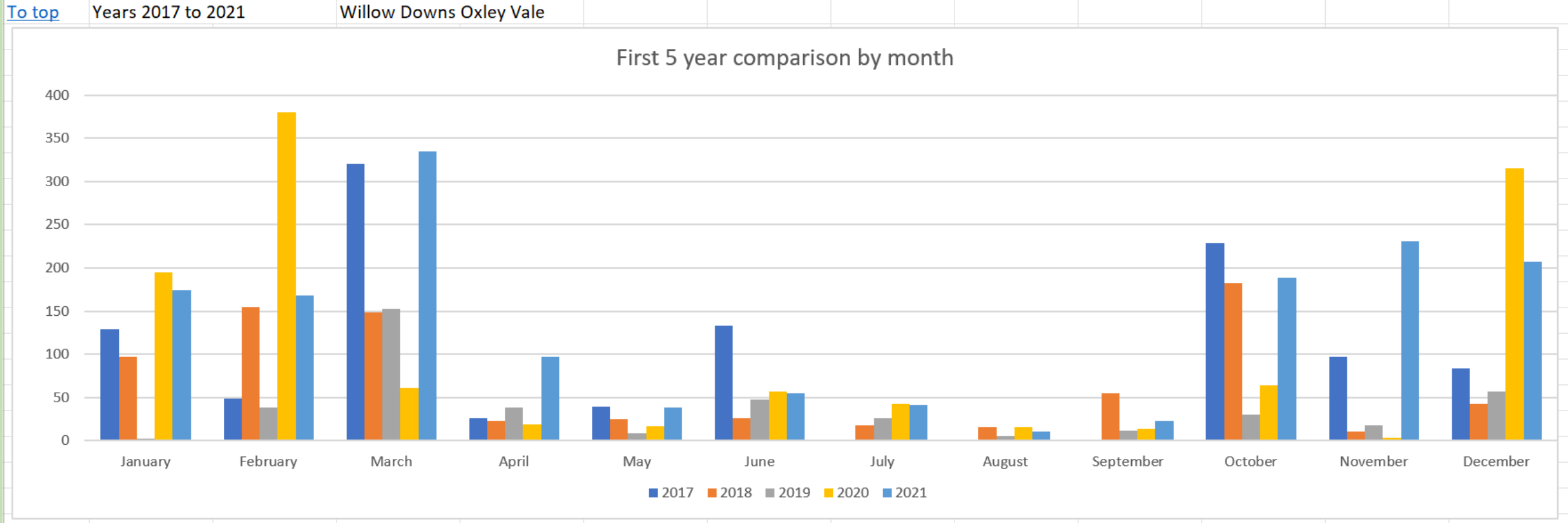
[2nd 5 years comparison](#) 2022 to 2026

[3rd 5 years comparison](#) 2027 to 2031

[4th 5 years comparison](#) 2032 to 2036



Here is the first five years in comparison (2017 – 2021)



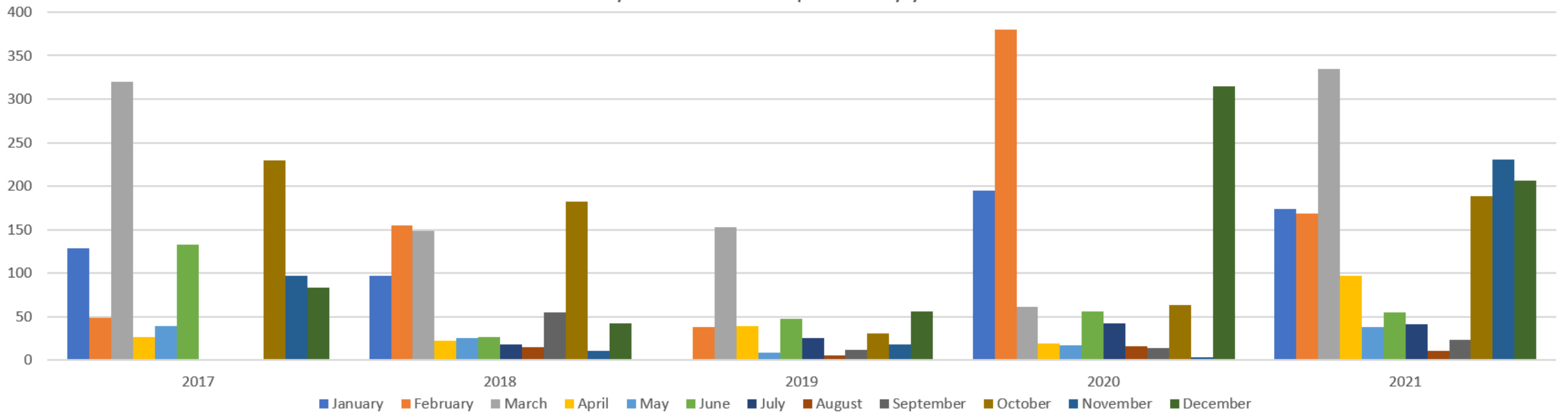
Compared monthly, year by year

[Go top](#)

Years 2017 to 2021

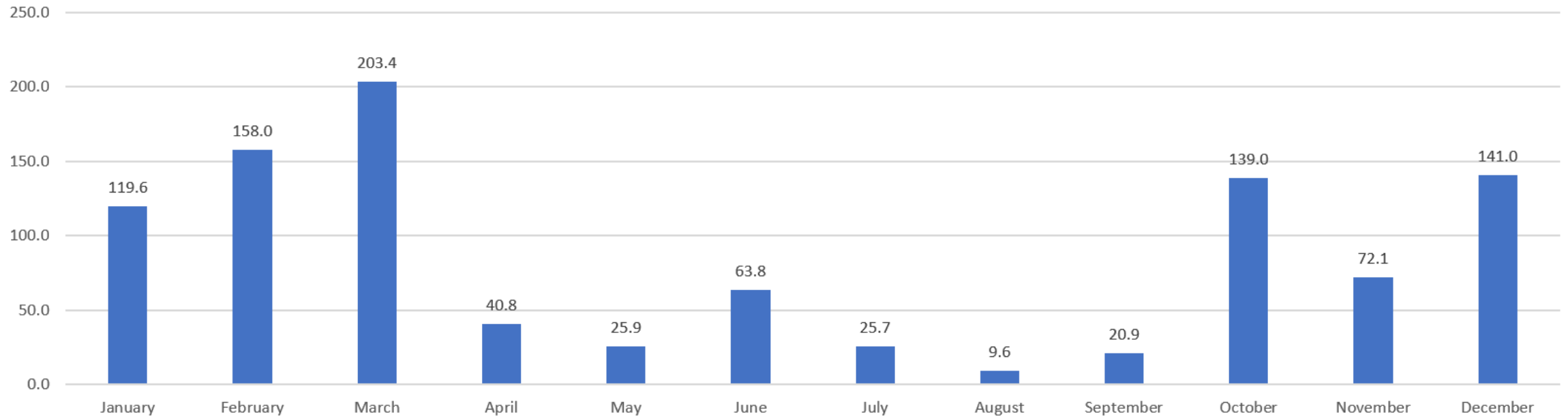
Willow Downs Oxley Vale

First 5 years rainfall comparison by year in mm



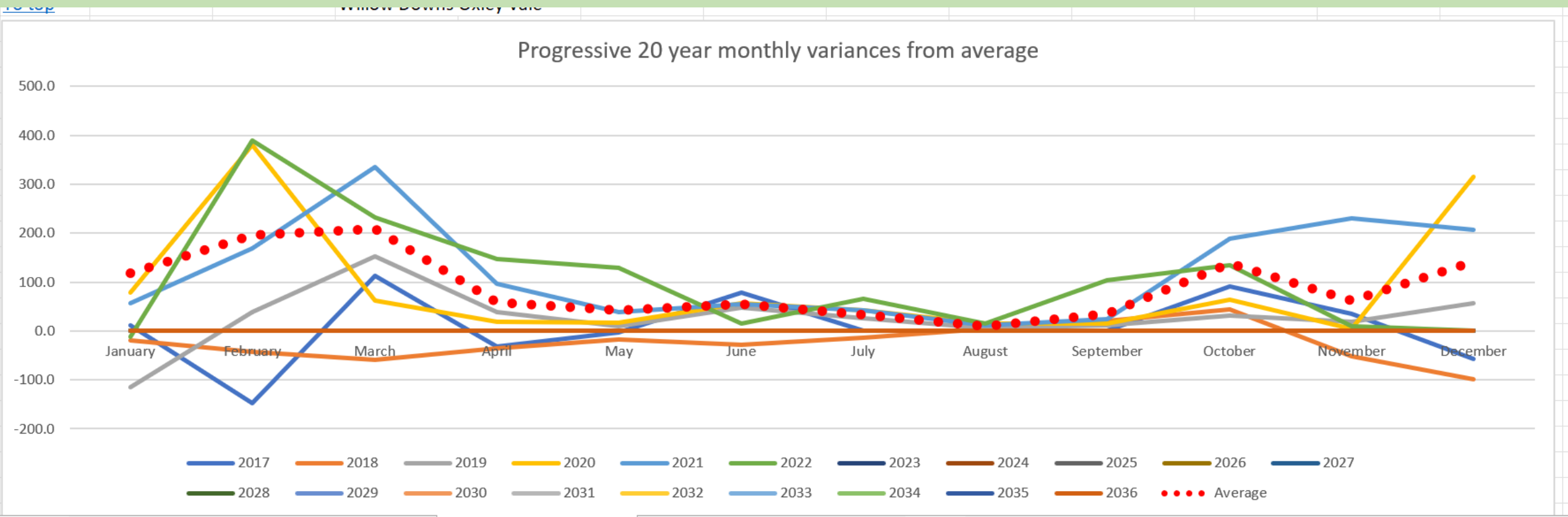
Compared yearly - note the rainless months in 2017

Monthly averages for first five years

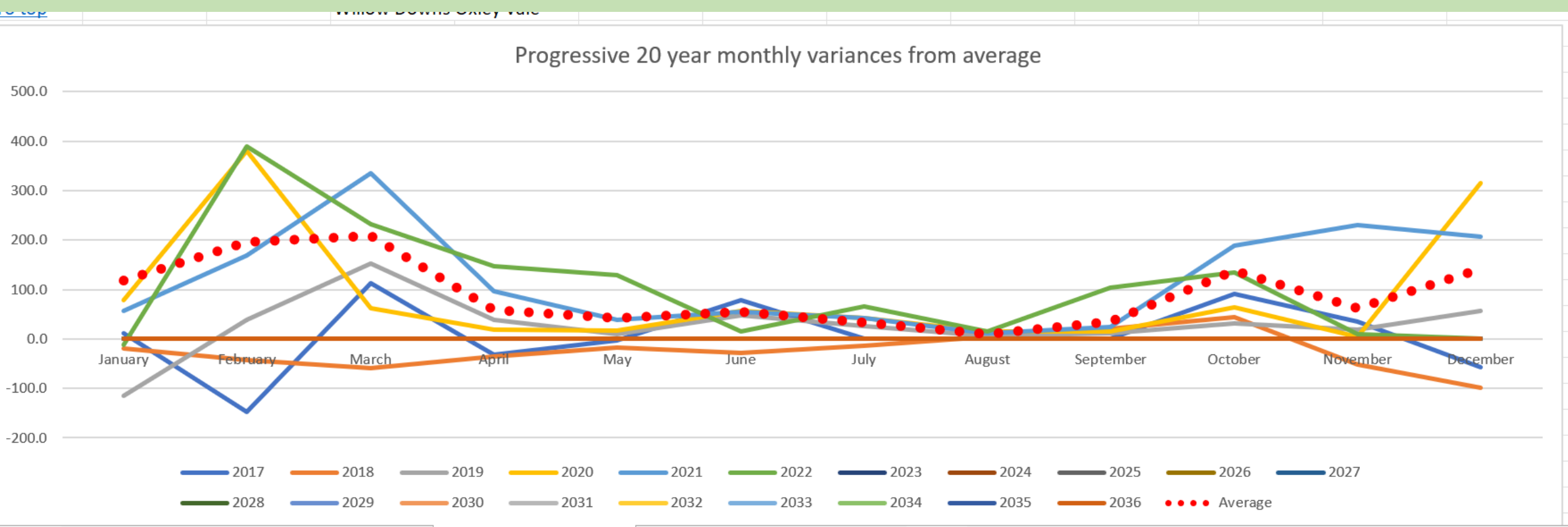


Monthly averages over the five years

And again even longer-term comparisons



Here showing the yearly variances from the over-all average (note only 6 years are shown here from a possible 20)



To give a clearer picture of longer-term results, we will now take a look at 20-year results from 1910 to 1929 from Bean Creek NSW. Recorded by the official area recorder in points (100 points to an inch). It has been entered in a Rain Master Record Keeper and converted to mm (divided by 100 and multiplied by 25.4 to give mm).

Bean Creek NSW records, 1910 - 1929

Rain Master Menu

Enter Name of Property of Rain Record

Bean Creek 1910 - 1929

Click on year no. to go to entry pages

Year 1.	1910
Year 2.	1911
Year 3.	1912
Year 4.	1913
Year 5.	1914
Year 6.	1915
Year 7.	1916
Year 8.	1917
Year 9.	1918
Year 10.	1919
Year 11.	1920
Year 12.	1921
Year 13.	1922
Year 14.	1923
Year 15.	1924
Year 16.	1925
Year 17.	1926
Year 18.	1927
Year 19.	1928
Year 20.	1929

Enter Start Year

Printable Charts

[Comparison of wettest months in 5 year periods](#)

[20 year progressive comparison](#) 1910 to 1929

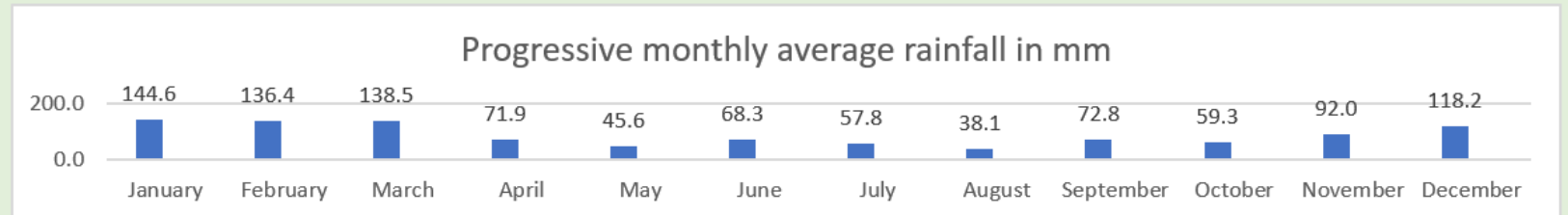
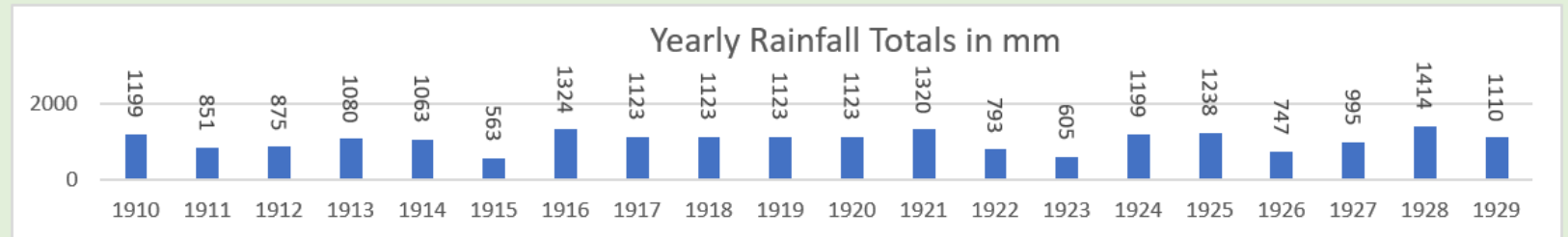
[Average comparisons](#)

[1st 5 years comparison](#) 1910 to 1914

[2nd 5 years comparison](#) 1915 to 1919

[3rd 5 years comparison](#) 1920 to 1924

[4th 5 years comparison](#) 1925 to 1929



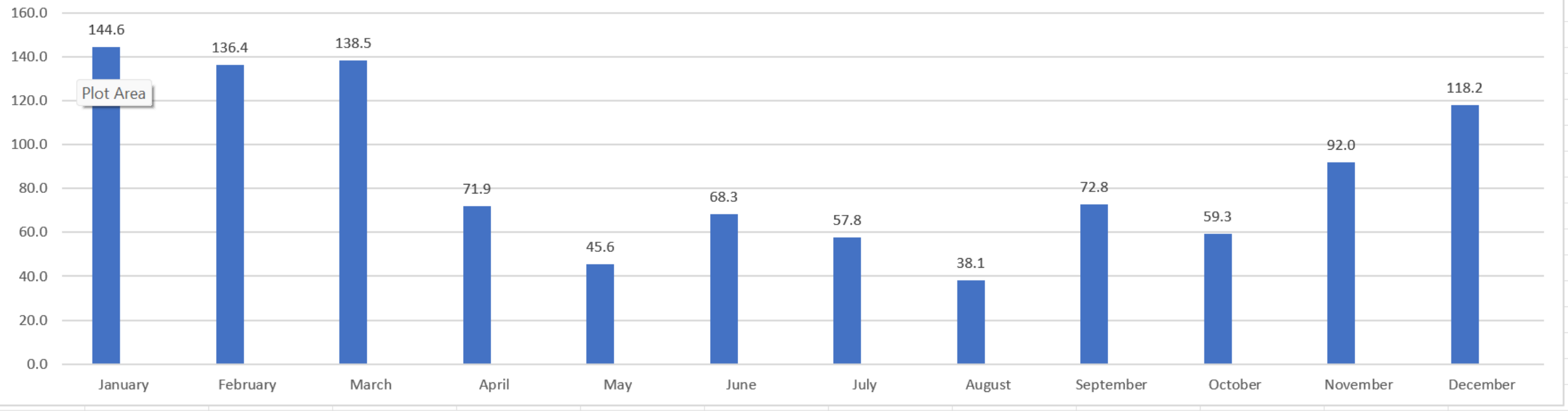
Bean Creek NSW records, 1910 – 1929

Average monthly rainfall over the 20 years

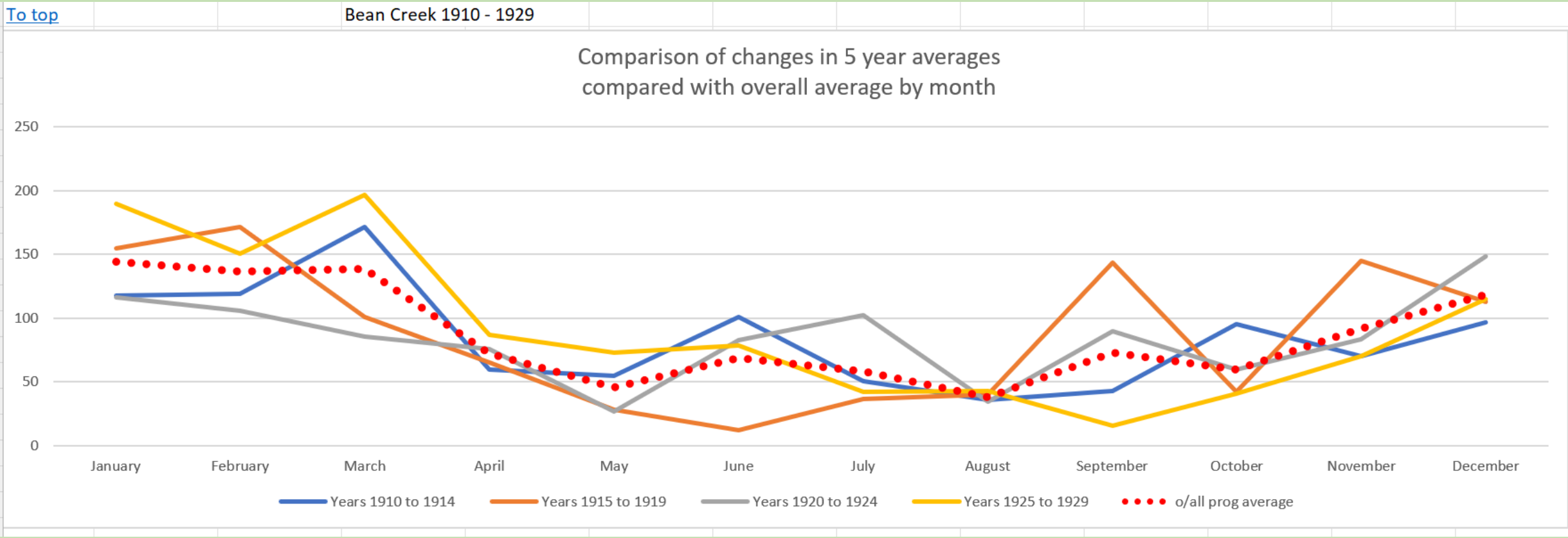
[To top](#)

Bean Creek 1910 - 1929

Progressive monthly average rainfall in mm



To help with clarity, this shows the 20 years broken into 5 year blocks compared with the overall average



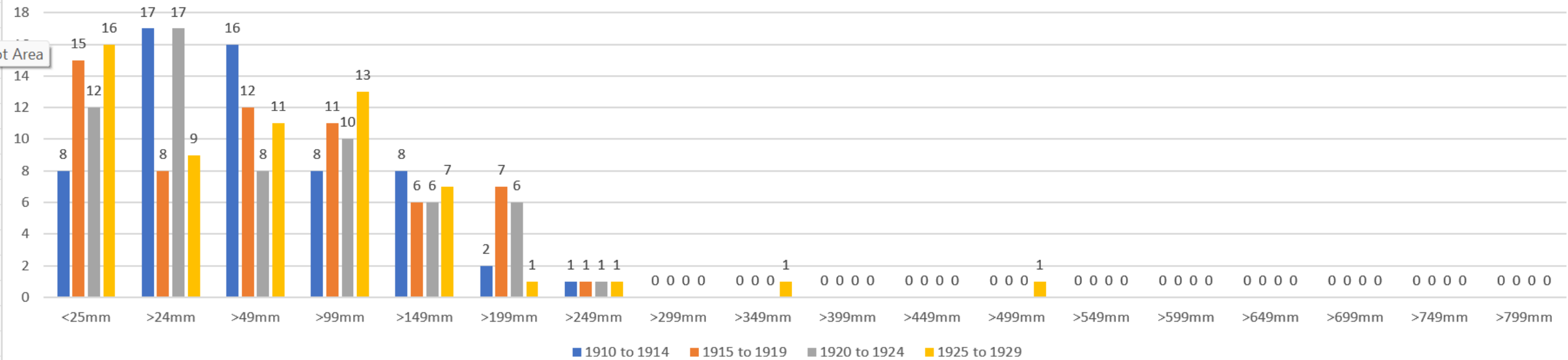
And how about the number of months per 5 year block of rainfall, above and below given mm

[To top](#)

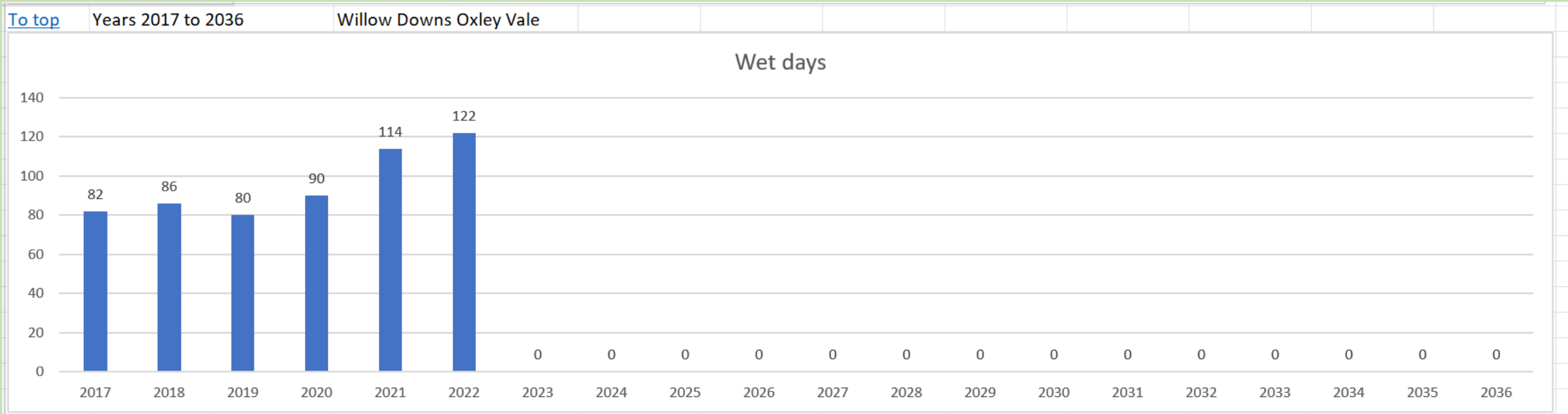
Years to

Bean Creek 1910 - 1929

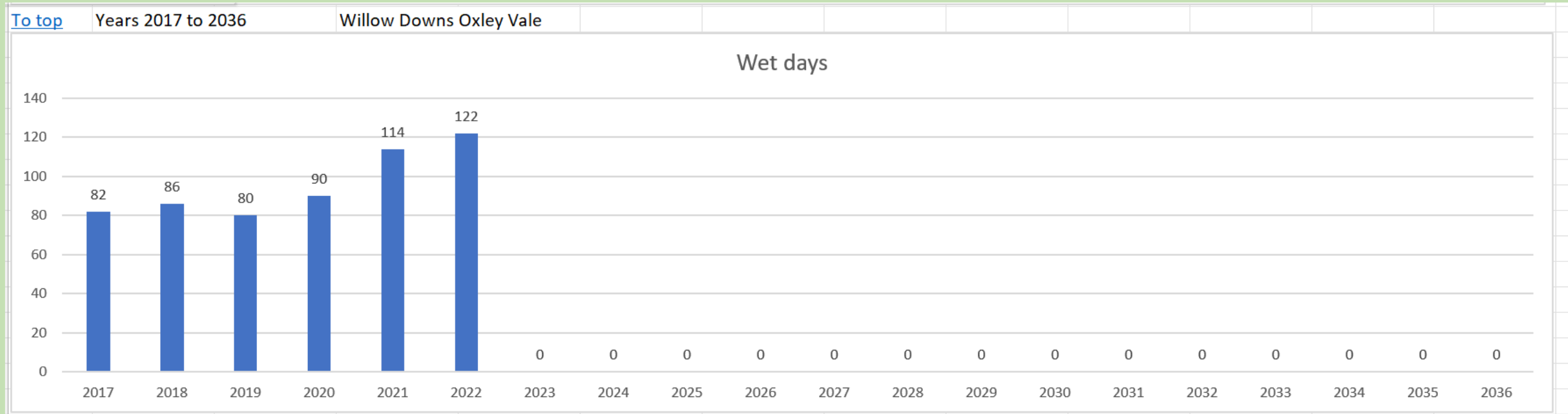
Number of months above mm compared in 5 year periods



And now back to Willow Downs...
the number of wet days per year



Note that in the recent drought in 2019 we still had 80 wet days - just not very much rain



And of course, a total display of all monthly rainfall over the 20 years

Progressive 20 Year Comparison			1910	to	1929	To graph 1	To graph 2	To graph 3	To graph 4	To graph 5	Bean Creek 1910 - 1929	
Averages	144.6	136.4	138.5	71.9	45.6	68.3	57.8	38.1	72.8	59.3	92.0	118.2
Area	January	February	March	April	May	June	July	August	September	October	November	December
1910	153.4	156.7	197.1	45.2	30.5	135.4	17.5	9.1	45.0	90.7	82.8	235.2
1911	291.6	158.0	121.2	34.8	38.1	1.8	31.0	20.3	20.3	77.7	23.6	33.0
1912	42.2	105.7	235.7	10.7	5.1	157.2	74.9	29.2	29.2	103.6	34.8	47.0
1913	66.3	79.8	111.0	160.0	119.4	116.1	77.0	86.1	86.1	73.4	30.2	74.2
1914	36.3	94.2	191.3	47.0	80.8	91.9	51.6	32.3	32.3	132.1	178.8	94.7
1915	58.9	31.5	30.7	68.8	55.4	4.8	110.0	30.0	30.0	0.0	13.7	129.3
1916	108.2	280.4	78.2	233.9	63.2	48.3	49.0	75.9	75.9	59.7	147.6	103.1
1917	202.2	181.4	131.3	7.6	7.6	2.5	7.6	31.5	203.5	49.8	187.7	110.7
1918	202.2	181.4	131.3	7.6	7.6	2.5	7.6	31.5	203.5	49.8	187.7	110.7
1919	202.2	181.4	131.3	7.6	7.6	2.5	7.6	31.5	203.5	49.8	187.7	110.7
1920	202.2	181.4	131.3	7.6	7.6	2.5	7.6	31.5	203.5	49.8	187.7	110.7
1921	88.6	44.2	126.5	112.8	57.4	178.6	236.2	3.8	124.5	47.8	41.9	257.3
1922	25.9	229.6	25.4	7.6	35.1	48.3	86.9	7.6	62.0	55.4	25.7	183.4
1923	43.7	0.0	108.7	210.8	0.0	32.0	39.6	25.7	17.3	18.8	5.1	103.6
1924	220.0	71.6	33.5	40.6	31.5	150.4	140.2	101.6	42.2	124.5	157.0	86.4
1925	174.2	55.9	271.3	15.2	130.0	119.9	14.2	137.7	21.6	17.8	177.3	103.1
1926	112.3	0.0	132.6	43.7	82.6	62.2	38.6	29.5	22.9	11.9	18.3	192.0
1927	377.2	8.4	175.8	54.4	0.0	84.6	0.0	0.0	27.4	50.3	113.8	103.1
1928	118.9	547.6	160.5	178.3	127.0	25.9	78.2	31.0	2.5	37.3	0.0	106.4
1929	164.6	140.0	244.3	143.0	25.4	98.0	80.0	16.5	4.1	86.6	39.1	68.6

If this excites you and you have all your old rainfall charts, why not set to and enter them (or get the kids to) in a blank *Rain Master* record keeper

Progressive 20 Year Comparison			1910	to	1929	To graph 1	To graph 2	To graph 3	To graph 4	To graph 5	Bean Creek 1910 - 1929	
Averages	144.6	136.4	138.5	71.9	45.6	68.3	57.8	38.1	72.8	59.3	92.0	118.2
Area	January	February	March	April	May	June	July	August	September	October	November	December
1910	153.4	156.7	197.1	45.2	30.5	135.4	17.5	9.1	45.0	90.7	82.8	235.2
1911	291.6	158.0	121.2	34.8	38.1	1.8	31.0	20.3	20.3	77.7	23.6	33.0
1912	42.2	105.7	235.7	10.7	5.1	157.2	74.9	29.2	29.2	103.6	34.8	47.0
1913	66.3	79.8	111.0	160.0	119.4	116.1	77.0	86.1	86.1	73.4	30.2	74.2
1914	36.3	94.2	191.3	47.0	80.8	91.9	51.6	32.3	32.3	132.1	178.8	94.7
1915	58.9	31.5	30.7	68.8	55.4	4.8	110.0	30.0	30.0	0.0	13.7	129.3
1916	108.2	280.4	78.2	233.9	63.2	48.3	49.0	75.9	75.9	59.7	147.6	103.1
1917	202.2	181.4	131.3	7.6	7.6	2.5	7.6	31.5	203.5	49.8	187.7	110.7
1918	202.2	181.4	131.3	7.6	7.6	2.5	7.6	31.5	203.5	49.8	187.7	110.7
1919	202.2	181.4	131.3	7.6	7.6	2.5	7.6	31.5	203.5	49.8	187.7	110.7
1920	202.2	181.4	131.3	7.6	7.6	2.5	7.6	31.5	203.5	49.8	187.7	110.7
1921	88.6	44.2	126.5	112.8	57.4	178.6	236.2	3.8	124.5	47.8	41.9	257.3
1922	25.9	229.6	25.4	7.6	35.1	48.3	86.9	7.6	62.0	55.4	25.7	183.4
1923	43.7	0.0	108.7	210.8	0.0	32.0	39.6	25.7	17.3	18.8	5.1	103.6
1924	220.0	71.6	33.5	40.6	31.5	150.4	140.2	101.6	42.2	124.5	157.0	86.4
1925	174.2	55.9	271.3	15.2	130.0	119.9	14.2	137.7	21.6	17.8	177.3	103.1
1926	112.3	0.0	132.6	43.7	82.6	62.2	38.6	29.5	22.9	11.9	18.3	192.0
1927	377.2	8.4	175.8	54.4	0.0	84.6	0.0	0.0	27.4	50.3	113.8	103.1
1928	118.9	547.6	160.5	178.3	127.0	25.9	78.2	31.0	2.5	37.3	0.0	106.4
1929	164.6	140.0	244.3	143.0	25.4	98.0	80.0	16.5	4.1	86.6	39.1	68.6

Then you will know your own local area patterns and changes

Progressive 20 Year Comparison			1910	to	1929	To graph 1	To graph 2	To graph 3	To graph 4	To graph 5	Bean Creek 1910 - 1929	
Averages	144.6	136.4	138.5	71.9	45.6	68.3	57.8	38.1	72.8	59.3	92.0	118.2
Area	January	February	March	April	May	June	July	August	September	October	November	December
1910	153.4	156.7	197.1	45.2	30.5	135.4	17.5	9.1	45.0	90.7	82.8	235.2
1911	291.6	158.0	121.2	34.8	38.1	1.8	31.0	20.3	20.3	77.7	23.6	33.0
1912	42.2	105.7	235.7	10.7	5.1	157.2	74.9	29.2	29.2	103.6	34.8	47.0
1913	66.3	79.8	111.0	160.0	119.4	116.1	77.0	86.1	86.1	73.4	30.2	74.2
1914	36.3	94.2	191.3	47.0	80.8	91.9	51.6	32.3	32.3	132.1	178.8	94.7
1915	58.9	31.5	30.7	68.8	55.4	4.8	110.0	30.0	30.0	0.0	13.7	129.3
1916	108.2	280.4	78.2	233.9	63.2	48.3	49.0	75.9	75.9	59.7	147.6	103.1
1917	202.2	181.4	131.3	7.6	7.6	2.5	7.6	31.5	203.5	49.8	187.7	110.7
1918	202.2	181.4	131.3	7.6	7.6	2.5	7.6	31.5	203.5	49.8	187.7	110.7
1919	202.2	181.4	131.3	7.6	7.6	2.5	7.6	31.5	203.5	49.8	187.7	110.7
1920	202.2	181.4	131.3	7.6	7.6	2.5	7.6	31.5	203.5	49.8	187.7	110.7
1921	88.6	44.2	126.5	112.8	57.4	178.6	236.2	3.8	124.5	47.8	41.9	257.3
1922	25.9	229.6	25.4	7.6	35.1	48.3	86.9	7.6	62.0	55.4	25.7	183.4
1923	43.7	0.0	108.7	210.8	0.0	32.0	39.6	25.7	17.3	18.8	5.1	103.6
1924	220.0	71.6	33.5	40.6	31.5	150.4	140.2	101.6	42.2	124.5	157.0	86.4
1925	174.2	55.9	271.3	15.2	130.0	119.9	14.2	137.7	21.6	17.8	177.3	103.1
1926	112.3	0.0	132.6	43.7	82.6	62.2	38.6	29.5	22.9	11.9	18.3	192.0
1927	377.2	8.4	175.8	54.4	0.0	84.6	0.0	0.0	27.4	50.3	113.8	103.1
1928	118.9	547.6	160.5	178.3	127.0	25.9	78.2	31.0	2.5	37.3	0.0	106.4
1929	164.6	140.0	244.3	143.0	25.4	98.0	80.0	16.5	4.1	86.6	39.1	68.6

Progressive 20 Year Comparison			1910	to	1929	To graph 1	To graph 2	To graph 3	To graph 4	To graph 5	Bean Creek 1910 - 1929	
Averages	144.6	136.4	138.5	71.9	45.6	68.3	57.8	38.1	72.8	59.3	92.0	118.2
Area	January	February	March	April	May	June	July	August	September	October	November	December
1910	153.4	156.7	197.1	45.2	30.5	135.4	17.5	9.1	45.0	90.7	82.8	235.2
1911	291.6	158.0	121.2	34.8	38.1	1.8	31.0	20.3	20.3	77.7	23.6	33.0
1912	42.2	105.7	235.7	10.7	5.1	157.2	74.9	29.2	29.2	103.6	34.8	47.0
1913	66.0										30.2	74.2
1914	36.0										178.8	94.7
1915	58.0										13.7	129.3
1916	108.0										147.6	103.1
1917	202.0										187.7	110.7
1918	202.0										187.7	110.7
1919	202.0										187.7	110.7
1920	202.0										187.7	110.7
1921	88.6	44.2	126.5	112.8	57.4	178.6	236.2	3.8	124.5	47.8	41.9	257.3
1922	25.9	229.6	25.4	7.6	35.1	48.3	86.9	7.6	62.0	55.4	25.7	183.4
1923	43.7	0.0	108.7	210.8	0.0	32.0	39.6	25.7	17.3	18.8	5.1	103.6
1924	220.0	71.6	33.5	40.6	31.5	150.4	140.2	101.6	42.2	124.5	157.0	86.4
1925	174.2	55.9	271.3	15.2	130.0	119.9	14.2	137.7	21.6	17.8	177.3	103.1
1926	112.3	0.0	132.6	43.7	82.6	62.2	38.6	29.5	22.9	11.9	18.3	192.0
1927	377.2	8.4	175.8	54.4	0.0	84.6	0.0	0.0	27.4	50.3	113.8	103.1
1928	118.9	547.6	160.5	178.3	127.0	25.9	78.2	31.0	2.5	37.3	0.0	106.4
1929	164.6	140.0	244.3	143.0	25.4	98.0	80.0	16.5	4.1	86.6	39.1	68.6

By the way, you can make multiple copies of the *Rain Master* Record Keeper for your own use. But please respect the copyright by not making copies outside your own use.

Rain Master

Master **Record Keeping**